

DTTAS Quarterly Aviation Statistics Snapshot

Quarter 4 2016 Report

Contents

| | | |
|-----|---|---|
| 1.1 | Dublin Airport Key Statistics | 1 |
| 1.2 | Cork Airport Key Statistics | 3 |
| 1.3 | Shannon Airport Key Statistics | 5 |
| 1.4 | Total Passenger Traffic at State Airports | 7 |
| 1.5 | Background Notes: | 8 |

1.1 Dublin Airport Key Statistics

- A record 27.9 million passengers travelled through Dublin Airport in 2016, the highest it has been in over a decade when 21 million passengers passed through the airport.
- This compares to 25,049,779 for the same period in 2015, which represents growth in passenger numbers of 11.41% for that period.
- For the most recent quarter (Oct-Dec 2016) total passenger numbers were 6,495,966. This represents a growth in passenger numbers of 10.24% for the same period in 2015.
- Commercial movements at Dublin Airport for the year are up just over 8.52% compared to the same period in 2015; increasing from 191,233 to 207,520
- For the most recent quarter (Oct-Dec 2016) commercial movements numbered 48,932 - up from 46,278 for the same period in 2015.
- Cargo throughput at Dublin Airport decreased by -0.24% for the period January to December 2016 compared to the same period in 2015 – from 141,013 tonnes of cargo to 140,673 tonnes.

| Dublin Monthly Passenger Traffic | 2015 | 2016 | % Change |
|----------------------------------|------------|------------|----------|
| Jan | 1,456,413 | 1,705,330 | 17.09 |
| Feb | 1,471,218 | 1,725,014 | 17.25 |
| Mar | 1,819,067 | 2,137,345 | 17.50 |
| Apr | 2,017,253 | 2,223,551 | 10.23 |
| May | 2,239,988 | 2,492,243 | 11.26 |
| Jun | 2,495,217 | 2,729,552 | 9.39 |
| Jul | 2,694,576 | 2,947,955 | 9.40 |
| Aug | 2,645,303 | 2,882,009 | 8.95 |
| Sep | 2,318,403 | 2,569,228 | 10.82 |
| Oct | 2,282,694 | 2,495,327 | 9.32 |
| Nov | 1,835,759 | 2,003,622 | 9.14 |
| Dec | 1,773,888 | 1,997,017 | 12.58 |
| YTD | 25,049,779 | 27,908,193 | 11.41 |

- **Table 1: Passenger traffic at Dublin Airport to end December 2015 and 2016.**

| Dublin Airport Commercial Movements | 2015 | 2016 | % Change |
|-------------------------------------|---------|---------|----------|
| Jan | 13,149 | 14,528 | 10.49 |
| Feb | 12,573 | 14,106 | 12.19 |
| Mar | 14,453 | 16,092 | 11.34 |
| Apr | 15,584 | 17,044 | 9.37 |
| May | 17,015 | 18,719 | 10.01 |
| Jun | 18,101 | 19,384 | 7.09 |
| Jul | 18,732 | 20,154 | 7.59 |
| Aug | 18,137 | 19,872 | 9.57 |
| Sep | 17,211 | 18,689 | 8.59 |
| Oct | 17,072 | 18,323 | 7.33 |
| Nov | 14,722 | 15,269 | 3.72 |
| Dec | 14,484 | 15,340 | 5.91 |
| YTD | 191,233 | 207,520 | 8.52 |

Table 2: Commercial Movements at Dublin Airport to end December 2015 and 2016.

| Dublin Airport Cargo (tonnes) | 2015 | 2016 | % Change |
|-------------------------------|---------|---------|----------|
| Jan | 10,723 | 10,848 | 1.17 |
| Feb | 10,113 | 10,871 | 7.50 |
| Mar | 11,772 | 11,700 | -0.61 |
| Apr | 11,210 | 11,909 | 6.24 |
| May | 10,978 | 11,814 | 7.62 |
| Jun | 11,984 | 11,851 | -1.11 |
| Jul | 12,206 | 11,729 | -3.91 |
| Aug | 11,862 | 11,226 | -5.36 |
| Sep | 12,031 | 12,369 | 2.81 |
| Oct | 12,588 | 11,986 | -4.78 |
| Nov | 12,736 | 12,210 | -4.13 |
| Dev | 12,810 | 12,159 | -5.08 |
| YTD | 141,013 | 140,672 | -0.24 |

Table 3: Cargo throughput at Dublin Airport to end December 2015 and 2016.

1.2 Cork Airport Key Statistics

- Total passengers through Cork Airport for the period January 2016 to December 2016 were 2,230,564.
- This compares to 2,071,210 passengers for the same period in 2015, which represents an increase passenger numbers of 7.69% for that period.
- For the most recent quarter (Oct-Dec 2016) total passenger numbers were 475,665. This compares to 452,378 for the same period in 2015, representing 23,287 extra passengers an increase of 5.15% more.
- Commercial movements at Cork Airport for the year to are up 11.06% compared to the same period in 2015; increasing from 18,141 to 20,147.
- For the most recent quarter (Oct-Dec 2016) commercial movements numbered 4,279 down from 4,339 for the same period in 2015.
- Cargo throughput at Cork Airport decreased from 727 tonnes for the period January - December 2015 to 51 tonnes for the same period in 2016.

| Cork Monthly Passenger Traffic | 2015 | 2016 | % Change |
|--------------------------------|-----------|-----------|----------|
| Jan | 117,506 | 125,362 | 6.69 |
| Feb | 121,150 | 132,377 | 9.27 |
| Mar | 141,999 | 162,211 | 14.23 |
| Apr | 167,509 | 171,647 | 2.47 |
| May | 190,045 | 208,022 | 9.46 |
| Jun | 224,898 | 246,904 | 9.78 |
| July | 243,553 | 258,175 | 6.00 |
| Aug | 223,655 | 251,959 | 12.66 |
| Sep | 188,517 | 198,242 | 5.16 |
| Oct | 189,389 | 189,577 | 0.10 |
| Nov | 133,044 | 146,342 | 10.00 |
| Dec | 129,945 | 139,746 | 7.54 |
| YTD | 2,071,210 | 2,230,564 | 7.69 |

Table 4: Passenger traffic at Cork Airport to end December 2015 and 2016.

| Cork Airport Commercial Movements | 2015 | 2016 | % Change |
|-----------------------------------|--------|--------|----------|
| Jan | 1,246 | 1,357 | 8.91 |
| Feb | 1,212 | 1,318 | 8.75 |
| Mar | 1,358 | 1,523 | 12.15 |
| Apr | 1,487 | 1,655 | 11.30 |
| May | 1,638 | 1,959 | 19.60 |
| Jun | 1,800 | 2,143 | 19.06 |
| Jul | 1,835 | 2,099 | 14.39 |
| Aug | 1,661 | 2,060 | 24.02 |
| Sep | 1,565 | 1,754 | 12.08 |
| Oct | 1,661 | 1,638 | -1.38 |
| Nov | 1,321 | 1,317 | -0.30 |
| DEC | 1,357 | 1,324 | -2.43 |
| YTD | 18,141 | 20,147 | 11.06 |

Table 5: Commercial Movements at Cork Airport January to end December 2015 and 2016.

| Cork Airport Cargo (tonnes) | 2015 | 2016 | % Change |
|-----------------------------|------|------|----------|
| Jan | 59 | 4 | -93.22 |
| Feb | 42 | 4 | -90.48 |
| Mar | 58 | 5 | -91.38 |
| Apr | 74 | 5 | -93.24 |
| May | 72 | 4 | -94.44 |
| Jun | 69 | 5 | -92.75 |
| Jul | 73 | 4 | -94.52 |
| Aug | 55 | 4 | -92.73 |
| Sep | 59 | 4 | -93.22 |
| Oct | 61 | 4 | -93.44 |
| Nov | 54 | 4 | -92.59 |
| Dec | 51 | 4 | -92.16 |
| YTD | 727 | 51 | -93.00 |

Table 6: Cargo throughput at Cork Airport to end December 2015 and 2016.

1.3 Shannon Airport Key Statistics

- Total passengers through Shannon Airport for the period January 2016 to December 2016 were 1,748,935.
- This compares to 1,714,872 for the same period in 2015, which represents growth in passenger numbers of 1.99% for that period.
- For the most recent quarter (Oct-Dec 2016) total passenger numbers were 372,350. This is an increase of 1.48% when passenger numbers were 366,919 for the same period in 2015.
- Commercial movements at Shannon Airport for the year are up by 2.35% compared to the same period in 2015; increasing from 18,710 to 19,149.
- For the most recent quarter (Oct – Dec 2016) commercial movements numbered 4,378 - up from 4,240 for the same period in 2015.
- Cargo throughput at Shannon Airport increased by 12.08% for the period January to December 2016 compared to the same period in 2015 – from 12,272 tonnes of cargo to 13,754 tonnes.

| Shannon Monthly Traffic (Terminal Traffic Only) | 2015 | 2016 | % Change |
|---|-----------|-----------|----------|
| Jan | 86,899 | 91,905 | 5.76 |
| Feb | 80,501 | 88,978 | 10.53 |
| Mar | 105,269 | 116,703 | 10.86 |
| Apr | 132,028 | 127,732 | -3.25 |
| May | 162,341 | 164,993 | 1.63 |
| Jun | 194,542 | 200,780 | 3.21 |
| Jul | 217,827 | 211,577 | -2.87 |
| Aug | 200,067 | 205,018 | 2.47 |
| Sep | 168,479 | 168,899 | 0.25 |
| Oct | 154,935 | 150,175 | -3.07 |
| Nov | 106,189 | 109,387 | 3.01 |
| Dec | 105,795 | 112,788 | 6.61 |
| YTD | 1,714,872 | 1,748,935 | 1.99 |

Table 7: Passenger traffic at Shannon Airport to end December 2015 and 2016.

| Shannon Airport Commercial Movements | 2015 | 2016 | % Change |
|--------------------------------------|--------|--------|----------|
| Jan | 1,253 | 1,222 | -2.47 |
| Feb | 1,026 | 1,128 | 9.94 |
| Mar | 1,277 | 1,390 | 8.85 |
| Apr | 1,454 | 1,488 | 2.34 |
| May | 1,725 | 1,807 | 4.75 |
| Jun | 2,169 | 2,031 | -6.36 |
| Jul | 2,058 | 2,032 | -1.26 |
| Aug | 1,728 | 1,834 | 6.13 |
| Sep | 1,780 | 1,839 | 3.31 |
| Oct | 1,645 | 1,698 | 3.22 |
| Nov | 1,283 | 1,353 | 5.46 |
| Dec | 1,312 | 1,327 | 1.14 |
| YTD | 18,710 | 19,149 | 2.35 |

Table 8: Commercial Movements at Shannon Airport to end December 2015 and 2016.

| Shannon Airport Cargo (tonnes) | 2015 | 2016 | % Change |
|--------------------------------|--------|-------|----------|
| Jan | 880 | 884 | 0.45 |
| Feb | 848 | 889 | 4.83 |
| Mar | 954 | 986 | 3.35 |
| Apr | 906 | 994 | 9.71 |
| May | 875 | 1,020 | 16.57 |
| Jun | 1,108 | 1,132 | 2.17 |
| Jul | 1,273 | 1,092 | -14.22 |
| Aug | 921 | 1,131 | 22.8 |
| Sep | 1,367 | 1,216 | -11.05 |
| Oct | 1,002 | 1464 | 46.11 |
| Nov | 971 | 1396 | 43.77 |
| Dec | 1,167 | 1550 | 32.82 |
| YTD | 12,272 | 13754 | 12.08 |

Table 9: Cargo throughput at Shannon Airport to end December 2015 and 2016.

1.4 Total Passenger Traffic at State Airports

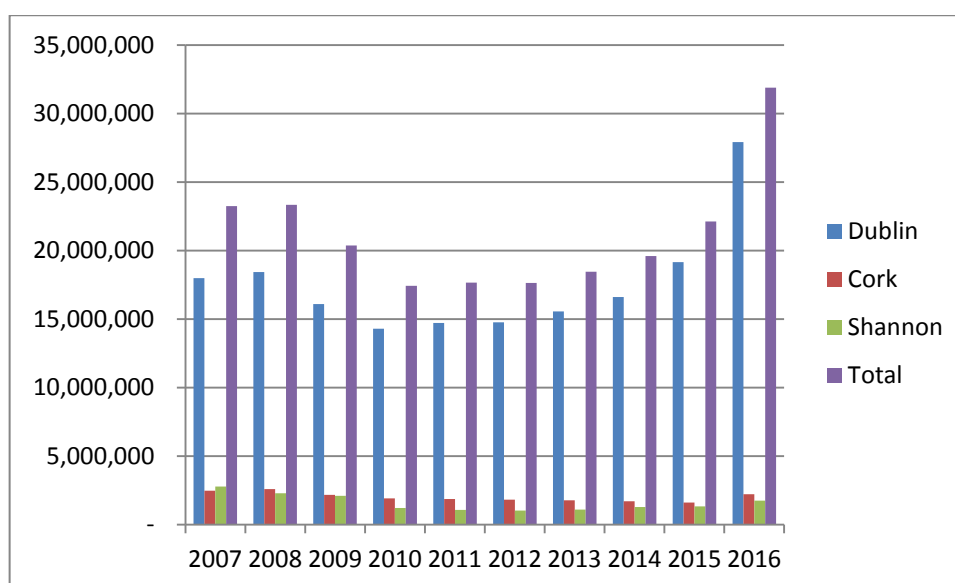
- Total passenger numbers at the 3 State Airports for the period January 2016 to December 2016 were 31,887,692.
- This compares to 28,835,861 for the same period in 2015, which represents growth in passenger numbers of 10.58% for that period.
- For the most recent quarter (Oct-Dec 2016) total passenger numbers were 7,343,981. This represents an increase of 9.42% on the same period in 2015 when total passenger numbers were 6,711,638.

| Total Passenger Traffic at State Airports | 2015 | 2016 | % Change |
|---|------------|------------|----------|
| Jan | 1,660,818 | 1,922,597 | 15.76 |
| Feb | 1,672,869 | 1,946,369 | 16.34 |
| Mar | 2,066,335 | 2,146,259 | 16.92 |
| Apr | 2,316,790 | 2,522,930 | 8.89 |
| May | 2,592,374 | 2,865,258 | 10.53 |
| Jun | 2,914,657 | 3,177,236 | 9.01 |
| Jul | 3,155,956 | 3,417,707 | 8.29 |
| Aug | 3,069,025 | 3,338,986 | 8.80 |
| Sep | 2,675,399 | 2,936,369 | 9.74 |
| Oct | 2,627,018 | 2,835,079 | 9.44 |
| Nov | 2,074,992 | 2,259,351 | 8.88 |
| Dec | 2,009,628 | 2,249,551 | 11.94 |
| YTD | 28,835,861 | 31,887,692 | 10.58 |

Table 9: Total Passenger Traffic at State Airports to end December 2015 and 2016.

Table 10: Total passenger traffic at State Airports for January – December of each year (2007-2016)

| Total passenger traffic at State Airports for period Jan-Dec | Dublin | Cork | Shannon | Total |
|--|------------|-----------|-----------|------------|
| 2007 | 23,287,438 | 3,180,259 | 3,620,623 | 30,088,320 |
| 2008 | 23,466,711 | 3,258,639 | 3,169,529 | 29,894,879 |
| 2009 | 20,503,677 | 2,769,048 | 2,794,563 | 26,067,288 |
| 2010 | 18,431,064 | 2,425,131 | 1,755,885 | 22,612,080 |
| 2011 | 18,740,593 | 2,361,947 | 1,656,504 | 22,759,044 |
| 2012 | 19,099,649 | 2,340,115 | 1,395,402 | 22,835,166 |
| 2013 | 20,167,783 | 2,258,005 | 1,400,032 | 23,825,820 |
| 2014 | 21,711,967 | 2,144,476 | 1,639,315 | 25,495,758 |
| 2015 | 25,049,779 | 2,071,210 | 1,714,872 | 28,835,861 |
| 2016 | 27,908,193 | 2,230,564 | 1,748,935 | 31,887,692 |



1.5 Background Notes:

- This publication is produced by the Department of Transport, Tourism and Sport with the statistics provided by the relevant airports. Given the nature of this report in providing up to date data statistics, the figures are provisional and remain subject to change.
- The purpose of this publication is to supplement annual statistics available in the Central Statistics Office annual release entitled Aviation Statistics. Discrepancies arise between the figures in this quarterly bulletin and the CSO release due to, for example, classification differences or the fact that this provisional data is subject to correction before the Airports report end of year figures to the CSO. In the case of Shannon Airport, the CSO does not report on transit passenger numbers however they are reflected in this document. The CSO

Aviation Statistics release remains the source of official statistics on aviation. The CSO Aviation Statistics release is available at:

<http://cso.ie/en/releasesandpublications/er/as/aviationstatistics2014/>