

DTTAS Quarterly Aviation Statistics Snapshot

Quarter 1 2017 Report

Contents

1.1	Dublin Airport Key Statistics	1
1.2	Cork Airport Key Statistics	3
1.3	Shannon Airport Key Statistics	5
1.4	Total Passenger Traffic at State Airports	7
1.5	Background Notes:	9

1.1 Dublin Airport Key Statistics

- Total passengers through Dublin Airport for the period January 2017 to March 2017 were 5,826,530.
- This compares to 5,566,105 for the same period in 2016, which represents growth in passenger numbers of 4.68% for that period.
- Commercial movements at Dublin Airport for the year to date are up just over 2.41% compared to the same period in 2016; increasing from 44,726 to 45,805.
- Cargo throughput at Dublin Airport increased by 1.22% for the period January to March 2017 compared to the same period in 2016 – from 33,446 tonnes of cargo to 33,854 tonnes.

Dublin Monthly Passenger Traffic	2016	2017	% Change
Jan	1,705,330	1,857,094	8.90
Feb	1,724,646	1,790,857	3.84
Mar	2,136,129	2,178,579	1.99
Apr	2,222,551		
May	2,492,243		
Jun	2,730,939		
Jul	2,948,189		
Aug	2,882,183		
Sep	2,569,054		
Oct	2,495,327		
Nov	2,003,622		
Dec	1,997,171		
YTD	5,566,105	5,826,530	4.68

- **Table 1: Passenger traffic at Dublin Airport to end March 2016 and 2017.**

Dublin Airport Commercial Movements	2016	2017	% Change
Jan	14,528	15,159	4.34
Feb	14,106	14,086	-0.14
Mar	16,092	16,560	2.91
Apr	17,043		
May	18,719		
Jun	19,384		
Jul	20,154		
Aug	19,873		
Sep	18,689		
Oct	18,323		
Nov	15,269		
Dec	15,340		
YTD	44,726	45,805	2.41

Table 2: Commercial Movements at Dublin Airport to end March 2016 and 2017.

Dublin Airport Cargo (tonnes)	2016	2017	% Change
Jan	10,848	10,891	0.40
Feb	10,871	10,269	-5.54
Mar	11,727	12,694	8.25
Apr	11,909		
May	11,814		
Jun	11,851		
Jul	11,729		
Aug	11,259		
Sep	12,401		
Oct	12,043		
Nov	12,248		
Dev	12,488		
YTD	33,446	33,854	1.22

Table 3: Cargo throughput at Dublin Airport to end March 2016 and 2017.

1.2 Cork Airport Key Statistics

- Total passengers through Cork Airport for the period January 2017 to March 2017 were 419,076.
- This compares to 419,950 passengers for the same period in 2016, which represents a slight decrease in passenger numbers of -0.21% for that period.
- Commercial movements at Cork Airport for the year to date are down -5.57% compared to the same period in 2016; decreasing from 4,198 to 3,964 .
- Cargo throughput at Cork Airport increased by 23.08% from 13 tonnes for the period January - March 2016 to 16 tonnes for the same period in 2017.

Cork Monthly Passenger Traffic	2016	2017	% Change
Jan	125,362	132,053	5.34
Jan	132,377	132,454	0.06
Mar	162,211	154,569	-4.71
Apr	171,647		
May	208,022		
Jun	246,904		
July	258,175		
Aug	251,959		
Sep	198,242		
Oct	189,577		
Nov	146,342		
Dec	139,746		
YTD	419,950	419,076	- 0.21

Table 4: Passenger traffic at Cork Airport to end March 2016 and 2017.

Cork Airport Commercial Movements	2016	2017	% Change
Jan	1,357	1,300	-4.20
Feb	1,318	1,236	-6.22
Mar	1,523	1,428	-6.24
Apr	1,655		
May	1,959		
Jun	2,143		
Jul	2,099		
Aug	2,060		
Sep	1,754		
Oct	1,638		
Nov	1,317		
DEC	1,324		
YTD	4,198	3,964	-5.57

Table 5: Commercial Movements at Cork Airport to end March 2016 and 2017.

Cork Airport Cargo (tonnes)	2016	2017	% Change
Jan	4	3	-25.00
Feb	4	7	75.00
Mar	5	6	20.00
Apr	5		
May	4		
Jun	5		
Jul	4		
Aug	4		
Sep	4		
Oct	4		
Nov	4		
Dec	4		
YTD	13	16	23.08

Table 6: Cargo throughput at Cork Airport to end March 2016 and 2017.

1.3 Shannon Airport Key Statistics

- Total passengers through Shannon Airport for the period January 2017 to March 2017 were 301,988.
- This compares to 297,586 for the same period in 2016, which represents growth in passenger numbers of 1.48% for that period.
- Commercial movements at Shannon Airport for the year are up by 5.21% compared to the same period in 2016; increasing from 3,740 to 3,935.
- Cargo throughput at Shannon Airport increased by 14.32% for the period January to March 2017 compared to the same period in 2016 – from 2,759 tonnes of cargo to 3,154 tonnes.

Shannon Monthly Traffic (Terminal Traffic Only)	2016	2017	% Change
Jan	91,905	100,242	9.07
Feb	88,978	90,359	1.55
Mar	116,703	111,387	-4.56
Apr	127,732		
May	164,993		
Jun	200,780		
Jul	211,577		
Aug	205,018		
Sep	168,899		
Oct	150,175		
Nov	109,387		
Dec	112,788		
YTD	297,586	301,988	1.48

Table 7: Passenger traffic at Shannon Airport to end March 2016 and 2017.

Shannon Airport Commercial Movements	2016	2017	% Change
Jan	1,222	1,291	5.65
Feb	1,128	1,215	7.71
Mar	1,390	1,429	2.81
Apr	1,488		
May	1,807		
Jun	2,031		
Jul	2,032		
Aug	1,834		
Sep	1,839		
Oct	1,698		
Nov	1,353		
Dec	1,327		
YTD	3,740	3,935	5.21

Table 8: Commercial Movements at Shannon Airport to end March 2016 and 2017.

Shannon Airport Cargo (tonnes)	2016	2017	% Change
Jan	884	943	6.67
Feb	889	1,048	17.89
Mar	986	1,163	17.95
Apr	994		
May	1,020		
Jun	1,132		
Jul	1,092		
Aug	1,131		
Sep	1,216		
Oct	1,464		
Nov	1,396		
Dec	1,550		
YTD	2,759	3,154	14.32

Table 9: Cargo throughput at Shannon Airport to end March 2016 and 2017.

1.4 Total Passenger Traffic at State Airports

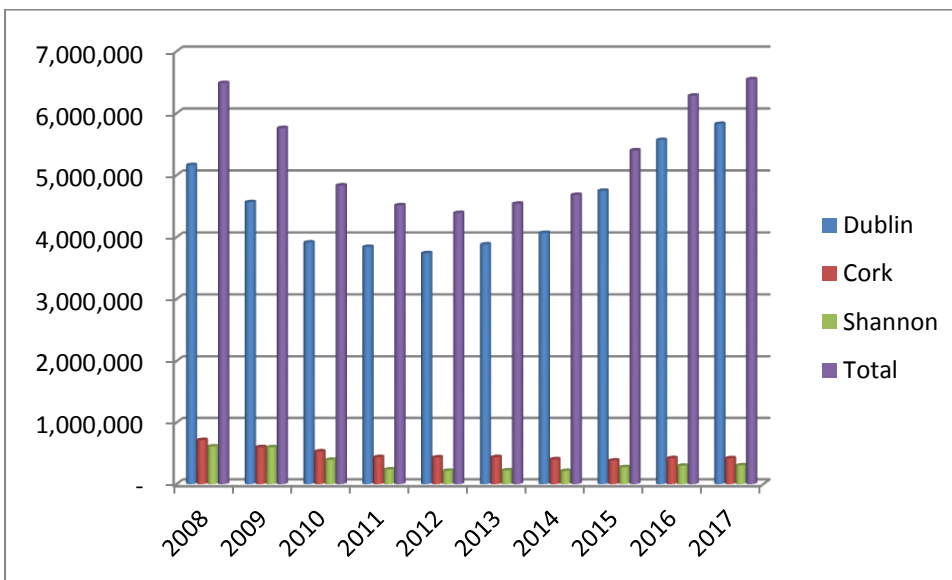
- Total passenger numbers at the 3 State Airports for the period January 2017 to March 2017 were 6,547,594.
- This compares to 6,283,641 for the same period in 2016, which represents growth in passenger numbers of 4.20% for that period.

Total Passenger Traffic at State Airports	2016	2017	% Change
Jan	1,922,597	2,089,389	8.68
Feb	1,946,001	2,013,670	3.48
Mar	2,415,043	2,444,535	1.22
Apr	2,521,930		
May	2,865,258		
Jun	3,178,623		
Jul	3,417,941		
Aug	3,339,160		
Sep	2,936,195		
Oct	2,835,079		
Nov	2,259,351		
Dec	2,249,705		
YTD	6,283,641	6,547,594	4.20

Table 9: Total Passenger Traffic at State Airports to end March 2016 and 2017.

Table 10: Total passenger traffic at State Airports for January – March of each year (2008-2017)

Total passenger traffic at State Airports for period Jan-March	Dublin	Cork	Shannon	Total
2008	5,160,800	714,300	611,000	6,486,100
2009	4,563,800	598,900	597,100	5,759,800
2010	3,912,100	528,900	392,600	4,833,600
2011	3,840,900	437,200	236,400	4,514,500
2012	3,740,400	432,800	215,500	4,388,700
2013	3,880,643	436,514	222,195	4,539,352
2014	4,066,935	402,027	212,023	4,680,985
2015	4,746,698	380,655	272,669	5,400,022
2016	5,566,105	419,950	297,586	6,283,641
2017	5,826,530	419,076	301,988	6,547,594



1.5 Background Notes:

- This publication is produced by the Department of Transport, Tourism and Sport with the statistics provided by the relevant airports. Given the nature of this report in providing up to date data statistics, the figures are provisional and remain subject to change.
- The purpose of this publication is to supplement annual statistics available in the Central Statistics Office annual release entitled Aviation Statistics. Discrepancies arise between the figures in this quarterly bulletin and the CSO release due to, for example, classification differences or the fact that this provisional data is subject to correction before the Airports report end of year figures to the CSO. In the case of Shannon Airport, the CSO does not report on transit passenger numbers however they are reflected in this document. The CSO Aviation Statistics release remains the source of official statistics on aviation. The CSO Aviation Statistics release is available at:

<http://cso.ie/en/releasesandpublications/er/as/aviationstatistics2014/>