

## Marine Notice No. 27 of 2015

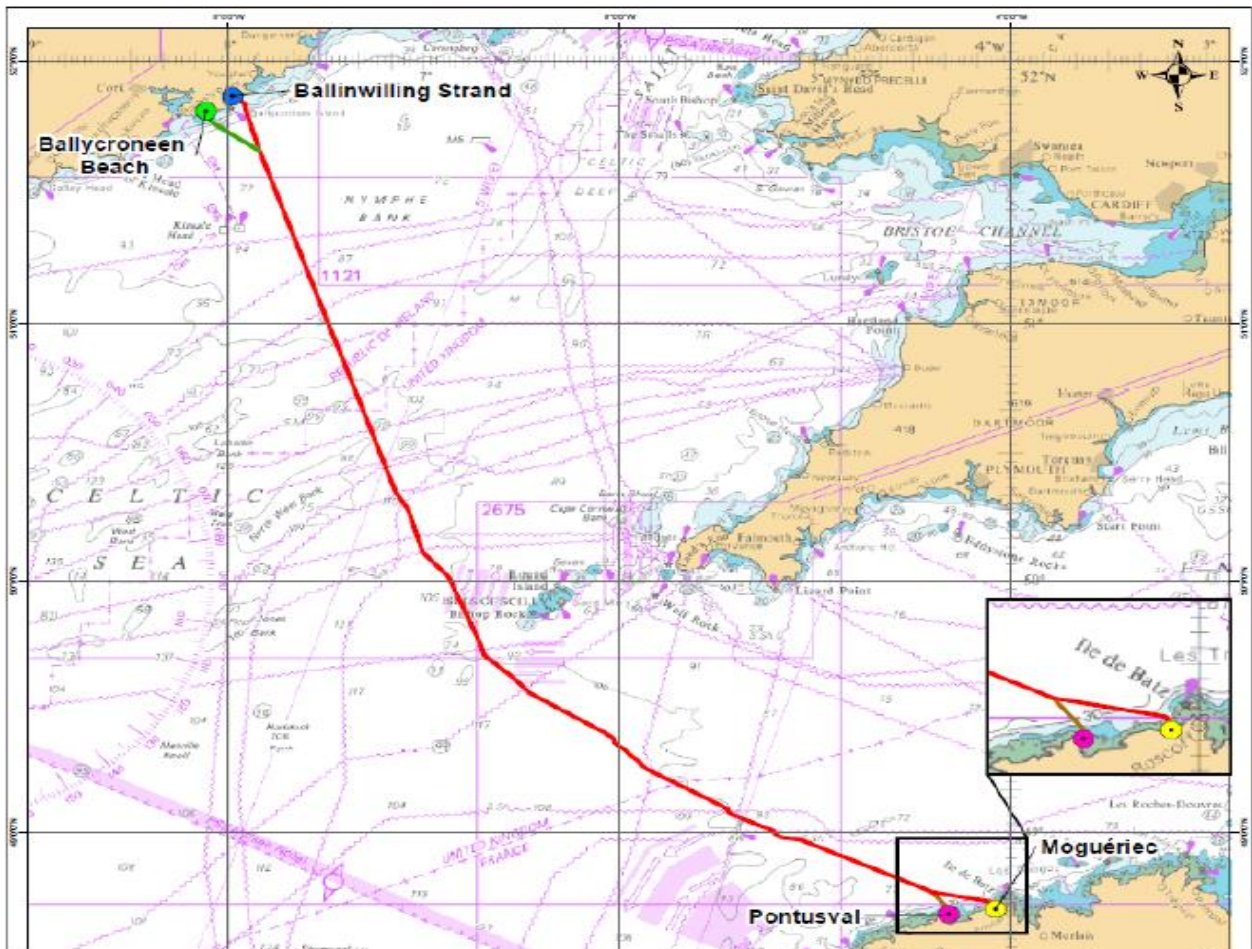
Notice to all Shipowners, Fishing Vessel Owners, Agents, Shipmasters, Skippers, Fishermen, Yachtsmen and Seafarers

### Marine Survey Operations off the South coast of Ireland

The Department of Transport, Tourism and Sport has been advised that Bibby Hydromap are scheduled to carry out marine survey operations, along the proposed interconnector route between Ireland and France. The marine surveys will extend from the shoreline at two locations (Ballinwilling Strand main route and Ballycreeen Beach alternative route), to the north coast of France, near Roscoff.

The survey will comprise of 250 geotechnical locations between the 10 metre contours of both countries. The survey vessel will be in DP (Stationary) while collecting samples and a wide berth is required.

Survey operations are expected to start on the 11th June 2015 and are expected to run until 30<sup>th</sup> July 2015 weather permitting. Survey works will be undertaken on the survey vessel "RRS Ernest Shackleton" (Callsign ZDLS1).



The vessel will operate on a 24hr basis and will display appropriate day shapes & lights during survey operations and will actively transmit an AIS signal.

Survey operations will involve towing survey equipment below the surface up to 600m behind the vessel. A wide berth is requested at all times as the vessel will be restricted in her ability to manoeuvre.

**All vessels, particularly those engaged in fishing, are requested to give the “*RRS Ernest Shackleton*” and her towed equipment a wide berth and keep a sharp lookout in the relevant areas.**

**All mariners are reminded of their responsibilities under the International Collision Regulations and are reminded of [Marine Notice No. 17 of 2007](#), which gives general advice in relation to the activities of vessels engaged in survey work for hydrographic, seismic, fishing research and underwater operations.**

The International Regulations for Prevention of Collisions at Sea (COLREGS) are implemented in Irish law by the *Merchant Shipping (Collision Regulations) (Ships and Water Craft on the Water) Order 2012* [S.I. No. 507 of 2012], and the *Signals of Distress (Ships) Rules 2012* [S.I. No.170 of 2012]. [See Marine Notice No. 06 of 2013](#). These Statutory Instruments may be purchased by mail order from Government Publications, Office of Public Works, 52 St. Stephen’s Green, Dublin 2. Tel: (01) 6476834/1890-213434. They are also available online at: [www.irishstatutebook.ie](http://www.irishstatutebook.ie).

Irish Maritime Administration,  
Department of Transport, Tourism and Sport,  
Leeson Lane, Dublin 2, Ireland.

11/06/2015

<p>For any technical assistance in relation to this Marine Notice, please contact: The Marine Survey Office, Leeson Lane, Dublin 2, tel: +353-(0)1-678 3400. For general enquiries, please contact the Maritime Safety Policy Division, tel: +353-(0)1-678 3418. Written enquiries concerning Marine Notices should be addressed to: Maritime Safety Policy Division, Dept. of Transport, Tourism and Sport, Leeson Lane, Dublin 2, Ireland. email: <a href="mailto:marinenotices@dtas.ie">marinenotices@dtas.ie</a> or visit us at: <a href="http://www.dttas.ie">www.dttas.ie</a></p>
---