

## Marine Notice No. 55 of 2017

Notice to all Shipowners, Fishing Vessel Owners, Agents, Shipmasters, Skippers, Fishers, Yachtsmen and Seafarers

### Demersal Groundfish Survey off the South and West Coast of Ireland.

The Department of Transport, Tourism and Sport has been advised by the Marine Institute that the annual Irish Groundfish Survey (IGFS2017) will be carried out off the South and West coasts of Ireland between the **5<sup>th</sup> November and 9<sup>th</sup> December 2017**, in fulfilment of Ireland's Common Fisheries Policy obligations. The IGFS is a demersal trawl survey consisting of approximately 125 fishing hauls of 30 min duration each in ICES area VIIb, VIIj and VIIk. The approximate location of these hauls is given in Fig 1 and Appendix 1. Fishing in 2017 will take place within a 2 nautical mile radius of these indicative positions.

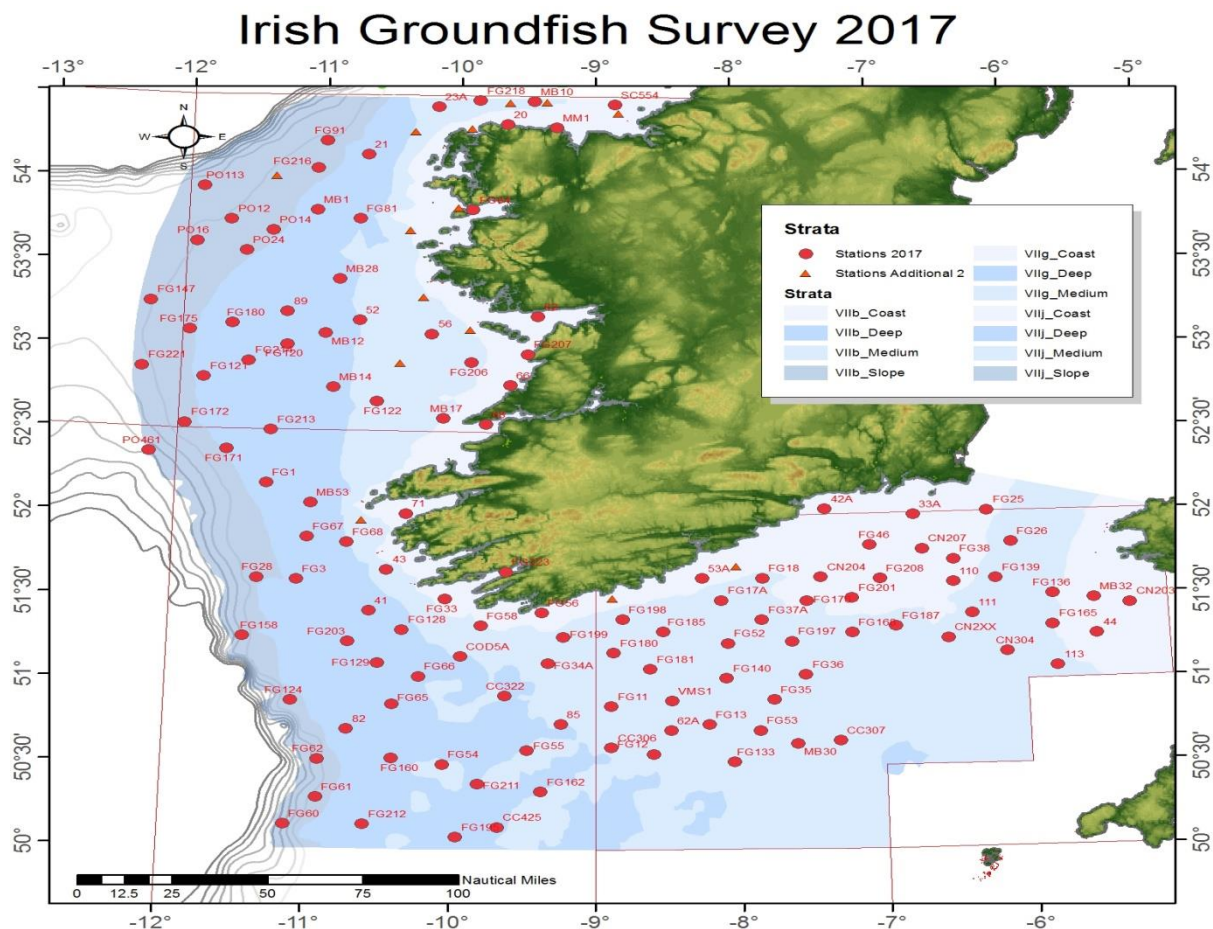


Fig 1. Map of IGFS2017 survey stations (red circles) labelled with Prime Station number.

The survey will be conducted by the R.V. "**Celtic Explorer**" (Callsign: **EIGB**). The vessel will display all appropriate lights and signals during the survey and will also be listening on **VHF**

**Channel 16.** The vessel will be towing a high headline GOV 36/47 demersal trawl during fishing operations.

The purpose of this is to annually survey for relative annual abundance and distribution of commercially exploited fish stocks, in particular assessment of recent recruitment. In addition, other species of national importance are sampled along with physical and chemical oceanographic parameters.

The Marine Institute would request that commercial fishing and other marine operators keep a 2nmi area around the tow points clear of any gear or apparatus during the survey period outlined above. While there is no statutory provision for the loss of gear at sea, the MI will make every effort to avoid gear adequately marked according to legislation<sup>1</sup> that may be encountered in the notified areas. In the event that an operator has static gear or other obstructions within 2nmi of the points listed above it is the responsibility of the owner to notify the survey managers or vessel directly. This should be communicated by identifying specifically which “Prime Station” is of concern using the Appendix and contact details provided. It is not required to provide positional details of commercial operations beyond 3-4 naut. mi. of the survey points provided.

**Please contact:**

Aodhan Fitzgerald, Marine Institute: 0872488765 or David Stokes, Marine Institute: 0874181376

**All mariners are reminded of their responsibilities under the International Collision Regulations and are reminded of [Marine Notice No. 17 of 2007](#), which gives general advice in relation to the activities of vessels engaged in survey work for hydrographic, seismic, fishing research and underwater operations.**

The International Regulations for Prevention of Collisions at Sea (COLREGS) are implemented in Irish law by the *Merchant Shipping (Collision Regulations) (Ships and Water Craft on the Water) Order 2012* [S.I. No. 507 of 2012], and the *Signals of Distress (Ships) Rules 2012* [S.I. No.170 of 2012]. [See Marine Notice No. 06 of 2013](#). These Statutory Instruments may be purchased by mail order from Government Publications, Office of Public Works, 52 St. Stephen’s Green, Dublin 2. Tel: (01) 6476834/1890-213434. They are also available online at: [www.irishstatutebook.ie](http://www.irishstatutebook.ie).

Irish Maritime Administration,  
Department of Transport, Tourism and Sport,  
Leeson Lane, Dublin 2, D02 TR60, Ireland.

09/11/2017  
Encl: Appendix

For any technical assistance in relation to this Marine Notice, please contact:  
The Marine Survey Office, Leeson Lane, Dublin 2, D02TR60 tel: +353-(0)1-678 3400.  
For general enquiries, please contact the Maritime Safety Policy Division, tel: +353-(0)1-678 3418.  
Written enquiries concerning Marine Notices should be addressed to:  
Maritime Safety Policy Division, Dept. of Transport, Tourism and Sport, Leeson Lane, Dublin 2  
D02TR60, Ireland.  
email: [marinenotices@dtas.ie](mailto:marinenotices@dtas.ie) or visit us at: [www.dttas.ie](http://www.dttas.ie)

<sup>1</sup> Articles 9-17 of EU Regulation 404-2011. Available at - <http://eur-lex.europa.eu>

For overview of regulations: <http://bim.ie/media/bim/content/downloads/BIM.Fisheries.Management.Chart.2015.pdf>

**Appendix 1.** IGFS Survey Stations are located by the following coordinates (WGS 84)

Station Id	Latitude	Longitude	PrimeStation	Stratum
26	54° 20.66' N	9° 39.57' W	20	VIIbCoast
43	53° 2.49' N	9° 41.37' W	59	VIIbCoast
44	53° 11.6' N	9° 25.39' W	62	VIIbCoast
45	52° 46.92' N	9° 37.14' W	66	VIIbCoast
155	52° 32.85' N	9° 47.56' W	68	VIIbCoast
446	53° 49.94' N	9° 54.44' W	FG84	VIIbCoast
149	54° 24.54' N	8° 49.83' W	MB27	VIIbCoast
369	54° 19.51' N	9° 17.51' W	MM1	VIIbCoast
140	54° 9.35' N	10° 41.5' W	21	VIIbDeep
36	52° 52.67' N	11° 3.1' W	50	VIIbDeep
31	53° 9.86' N	10° 43.24' W	52	VIIbDeep
34	53° 12.58' N	11° 14.94' W	89	VIIbDeep
1	53° 43.65' N	10° 52.24' W	95	VIIbDeep
354	52° 36.16' N	11° 45.25' W	FG105	VIIbDeep
273	53° 0.85' N	11° 14.11' W	FG120	VIIbDeep
449	53° 8.32' N	11° 38.53' W	FG180	VIIbDeep
427	52° 30.04' N	11° 19.79' W	FG213	VIIbDeep
154	52° 54.41' N	11° 30.39' W	FG214	VIIbDeep
33	53° 5.04' N	10° 57.63' W	MB12	VIIbDeep
35	53° 17.26' N	10° 57.38' W	MB13	VIIbDeep
39	52° 39.44' N	10° 43.47' W	48	VIIbMedium
223	52° 54.55' N	10° 25.05' W	53	VIIbMedium
46	52° 32.19' N	10° 19.68' W	70	VIIbMedium
430	54° 26.81' N	10° 10.59' W	23A	VIIbMedium
408	54° 29.2' N	9° 51.83' W	FG218	VIIbMedium
442	54° 28.67' N	9° 21.68' W	FG220	VIIbMedium
222	53° 18.21' N	10° 15.14' W	FG75	VIIbMedium
41	52° 57.33' N	9° 57.44' W	MB15	VIIbMedium
240	53° 15.68' N	11° 54.9' W	FG104	VIIbSlope
407	54° 4.29' N	11° 3.45' W	FG216	VIIbSlope
443	54° 22.06' N	11° 0.05' W	FG88	VIIbSlope
444	54° 1.22' N	11° 21.9' W	FG89	VIIbSlope
188	53° 41.64' N	11° 22.56' W	PO14	VIIbSlope
303	53° 36.9' N	11° 56.01' W	PO16	VIIbSlope
304	53° 28.38' N	12° 7.21' W	PO161	VIIbSlope
250	53° 7.61' N	12° 19.36' W	PO189	VIIbSlope
189	53° 34.21' N	11° 33.94' W	PO24	VIIbSlope
251	52° 58.14' N	12° 4.86' W	PO34	VIIbSlope
252	52° 43.13' N	12° 3.83' W	PO39	VIIbSlope
162	51° 15.58' N	5° 30.62' W	44	VIIgCoast
96	51° 59.63' N	6° 45.39' W	33A	VIIgCoast

79	51° 37.57' N	8° 15.28' W	53A	VllgCoast
366	51° 26.33' N	5° 15.86' W	CN203	VllgCoast
339	51° 47.33' N	6° 42.09' W	CN207	VllgCoast
391	51° 30.27' N	8° 53.09' W	F182	VllgCoast
329	51° 25.06' N	7° 36.23' W	FG166	VllgCoast
Station Id	Latitude	Longitude	PrimeStation	Stratum
356	52° 2.61' N	7° 29.36' W	FG177	VllgCoast
358	51° 35.18' N	7° 29.4' W	FG178	VllgCoast
389	51° 30.04' N	7° 12.46' W	FG201	VllgCoast
400	51° 36.88' N	7° 0.43' W	FG208	VllgCoast
98	52° 0.71' N	6° 14.01' W	FG25	VllgCoast
199	51° 43.22' N	6° 28.86' W	FG38	VllgCoast
198	51° 49' N	7° 4.51' W	FG46	VllgCoast
163	51° 28.41' N	5° 31' W	MB32	VllgCoast
94	51° 44.58' N	5° 52.84' W	40	VllgMedium
81	51° 15.69' N	8° 42.74' W	64	VllgMedium
91	51° 23.86' N	6° 22.08' W	111	VllgMedium
89	51° 4.47' N	5° 47.67' W	113	VllgMedium
74	50° 42.99' N	8° 28.8' W	62A	VllgMedium
72	50° 36.87' N	8° 53.66' W	CC306	VllgMedium
78	50° 38.87' N	7° 19' W	CC307	VllgMedium
343	51° 8.39' N	6° 29.06' W	CN303	VllgMedium
341	51° 9.88' N	6° 8.4' W	CN304	VllgMedium
365	51° 25.33' N	5° 46.82' W	CN307	VllgMedium
340	51° 27.71' N	6° 7.61' W	CN308	VllgMedium
73	50° 34.48' N	8° 36.26' W	FG12	VllgMedium
75	50° 45.04' N	8° 12.95' W	FG13	VllgMedium
287	50° 31.59' N	8° 2.75' W	FG133	VllgMedium
93	51° 36.26' N	6° 11.83' W	FG139	VllgMedium
293	51° 5.99' N	8° 48.77' W	FG141	VllgMedium
83	51° 5.99' N	8° 14.51' W	FG16	VllgMedium
332	51° 17.64' N	7° 12.85' W	FG168	VllgMedium
330	51° 29.62' N	8° 7.26' W	FG17A	VllgMedium
84	51° 37.43' N	7° 49.92' W	FG18	VllgMedium
80	51° 26.56' N	8° 32.2' W	FG183	VllgMedium
371	51° 19.8' N	6° 54.46' W	FG187	VllgMedium
388	51° 14.69' N	7° 38.06' W	FG197	VllgMedium
86	51° 10.11' N	7° 25.77' W	FG23	VllgMedium
99	51° 49.04' N	6° 4.57' W	FG26	VllgMedium
159	50° 53.83' N	7° 45.95' W	FG35	VllgMedium
290	51° 2.75' N	7° 32.51' W	FG36	VllgMedium
390	51° 22.57' N	7° 50.51' W	FG37A	VllgMedium
357	51° 21.02' N	8° 7.72' W	FG51	VllgMedium
206	50° 42.82' N	7° 51.85' W	FG53	VllgMedium

160	50° 37.96' N	7° 36.68' W	MB30	VIIgMedium
399	50° 53.67' N	8° 28.34' W	VMS1	VIIgMedium
56	51° 41.09' N	10° 13.79' W	FG2	VIIjCoast
423	51° 36.43' N	9° 48.95' W	FG204	VIIjCoast
210	51° 25.18' N	9° 22.99' W	FG56	VIIjCoast
67	51° 27.18' N	9° 39.7' W	FG9	VIIjCoast
49	52° 3.18' N	11° 10.87' W	39	VIIjDeep
57	51° 38.71' N	10° 49.15' W	42	VIIjDeep
65	50° 45.02' N	9° 54.92' W	84	VIIjDeep
Station Id	Latitude	Longitude	PrimeStation	Stratum
66	50° 45.21' N	9° 14.69' W	85	VIIjDeep
284	51° 6.88' N	10° 31.46' W	FG129	VIIjDeep
424	50° 54.79' N	10° 1.01' W	FG131	VIIjDeep
286	50° 31.19' N	9° 7.02' W	FG132	VIIjDeep
323	50° 32.65' N	10° 24.78' W	FG160	VIIjDeep
324	50° 21.26' N	9° 43.86' W	FG161	VIIjDeep
325	50° 20.97' N	9° 22.91' W	FG162	VIIjDeep
344	52° 22.88' N	11° 38.39' W	FG171	VIIjDeep
64	50° 43.84' N	10° 30.83' W	FG188	VIIjDeep
394	51° 14.44' N	10° 44.06' W	FG203	VIIjDeep
406	51° 13.66' N	11° 7.06' W	FG209	VIIjDeep
58	51° 36.63' N	11° 6.75' W	FG3	VIIjDeep
59	51° 28.41' N	10° 48.71' W	FG4	VIIjDeep
61	50° 50.71' N	10° 52.06' W	FG6	VIIjDeep
217	51° 2.15' N	10° 14.04' W	FG66	VIIjDeep
355	51° 51.87' N	11° 2.76' W	FG67	VIIjDeep
403	50° 4.92' N	10° 12.21' W	SC424	VIIjDeep
336	50° 53.62' N	9° 5.7' W	CC321	VIIjMedium
335	50° 55.4' N	9° 38.04' W	CC322	VIIjMedium
69	51° 9.52' N	9° 56.56' W	COD5A	VIIjMedium
373	51° 21.77' N	10° 16.29' W	FG190	VIIjMedium
393	51° 16.5' N	9° 13.77' W	FG199	VIIjMedium
208	50° 30.61' N	10° 3.62' W	FG54	VIIjMedium
54	51° 55.21' N	10° 34.41' W	MB18	VIIjMedium
70	51° 6.96' N	9° 36.11' W	MB20	VIIjMedium
280	51° 23.48' N	11° 27.67' W	FG126	VIIjSlope
317	52° 25.98' N	11° 58.29' W	FG155	VIIjSlope
386	50° 57.08' N	11° 11.63' W	FG196	VIIjSlope
405	50° 1.41' N	11° 1.14' W	FG210	VIIjSlope
215	50° 32.18' N	10° 55.02' W	FG62	VIIjSlope
277	52° 7.88' N	11° 36.83' W	FG70	VIIjSlope
220	51° 54.15' N	11° 31.5' W	FG71	VIIjSlope
29	54° 18.93' N	9° 55.2' W	25	VIIbCoast
42	53° 6.69' N	9° 54.81' W	58	VIIbCoast

352	53° 50.49' N	10° 0.69' W	FG83	VIIbCoast
30	54° 17.66' N	10° 20.67' W	22	VIIbMedium
227	53° 42.27' N	10° 21.81' W	FG80	VIIbMedium
370	54° 28.35' N	9° 38.36' W	MM2	VIIbMedium
337	51° 41.79' N	8° 0.69' W	CN205	VIIgCoast
294	51° 58.13' N	10° 39.74' W	MB51	VIIjMedium

\* Prime Station is the fixed station position annually, whether selected or not.

\*\* Stratum is the Survey subareas. Delimited by ICES Area and nominal depth contour relating to i) \*Coast (<80m);  
ii) \*Medium (<120m); iii) \*Deep (<200m); iv) \*Slope (<600m).